



GMT MONTHLY MEMBERSHIP PROGRESS REPORT

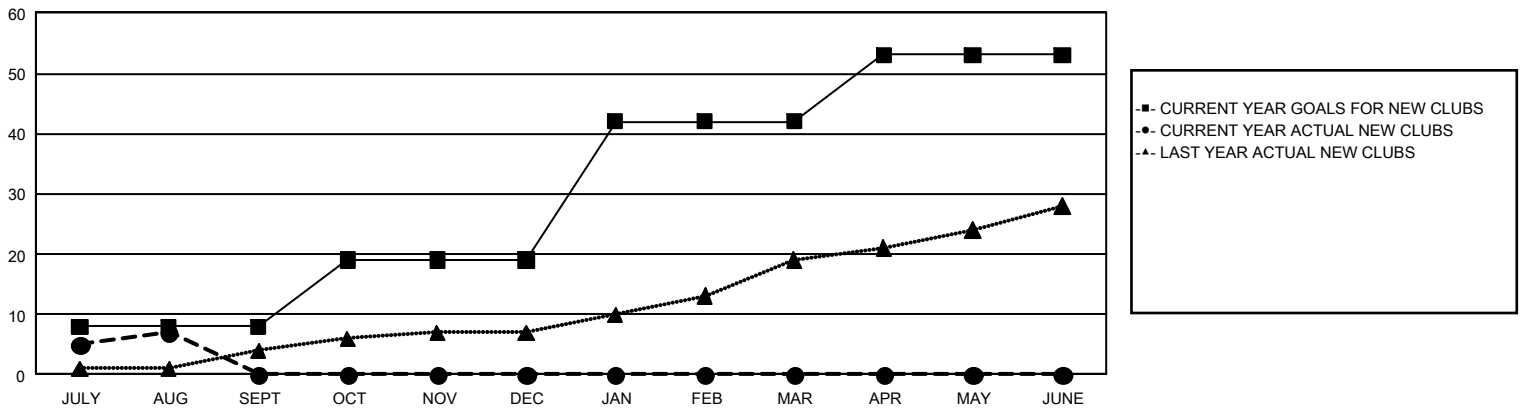
GAT Constitutional Area 5 - Japan

Results as of: 8/31/2025

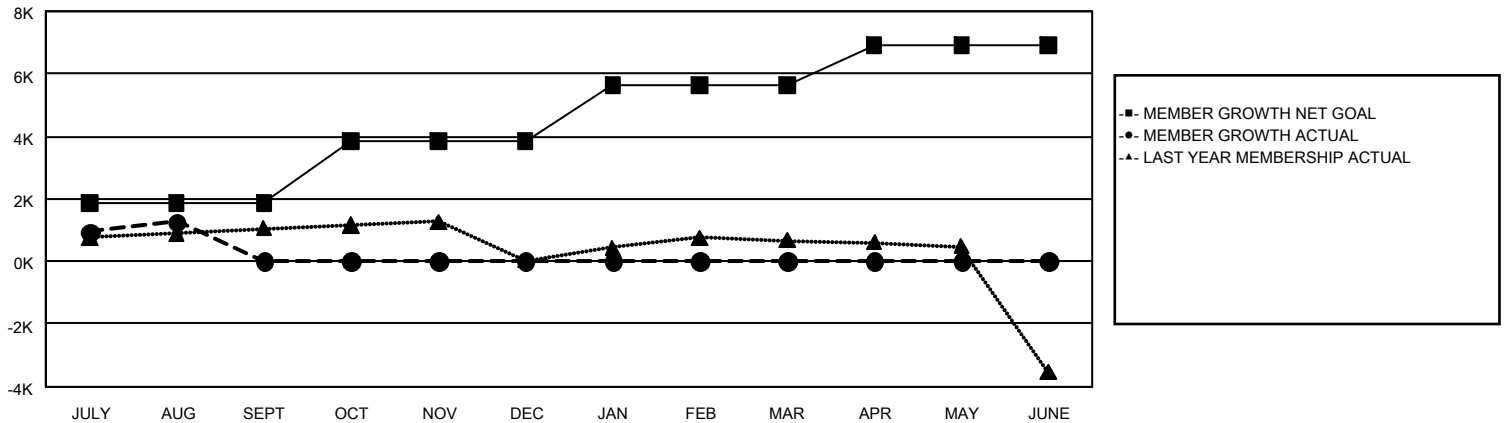
REPORT DOES NOT INCLUDE CLUBS IN UNDISTRICTED AREAS.

Clubs				Members			
RESULTS FOR 2025-2026				RESULTS FOR 2025-2026			
QUARTER	NEW CLUB GOAL	NEW CLUBS	DROPPED CLUBS	QUARTER	MEMBER GROWTH NET GOAL	MEMBER GROWTH ACTUAL	DROPPED MEMBERS ACTUAL (including transfers)
JULY/AUG/SEPT	8	7	2	JULY/AUG/SEPT	1,850	2,554	1,061
OCT/NOV/DEC	11	0	0	OCT/NOV/DEC	1,994	0	0
JAN/FEB/MAR	23	0	0	JAN/FEB/MAR	1,787	0	0
APR/MAY/JUNE	11	0	0	APR/MAY/JUNE	1,271	0	0

GOALS AND ACTUAL NEW CLUBS CUMULATIVE



GOALS AND ACTUAL MEMBERS CUMULATIVE



DROPPED CLUBS: 2

1,032 CLUBS OF 2,658 ADDED 1 OR MORE NEW MEMBERS

GENDER DISTRIBUTION

MALE 70,614 (77.43%)
FEMALE 20,559 (22.54%)

DROPPED MEMBERS

DECEASED	97
CLUB CANCELLED	2
OTHER	956
TOTAL	1,055

[CLICK HERE FOR CUMULATIVE MEMBERSHIP DATA](#)

TOTAL FAMILY UNIT MEMBERS	24,680
FAMILY MEMBERS PAYING HALF DUES	13,700